

FIG. 1

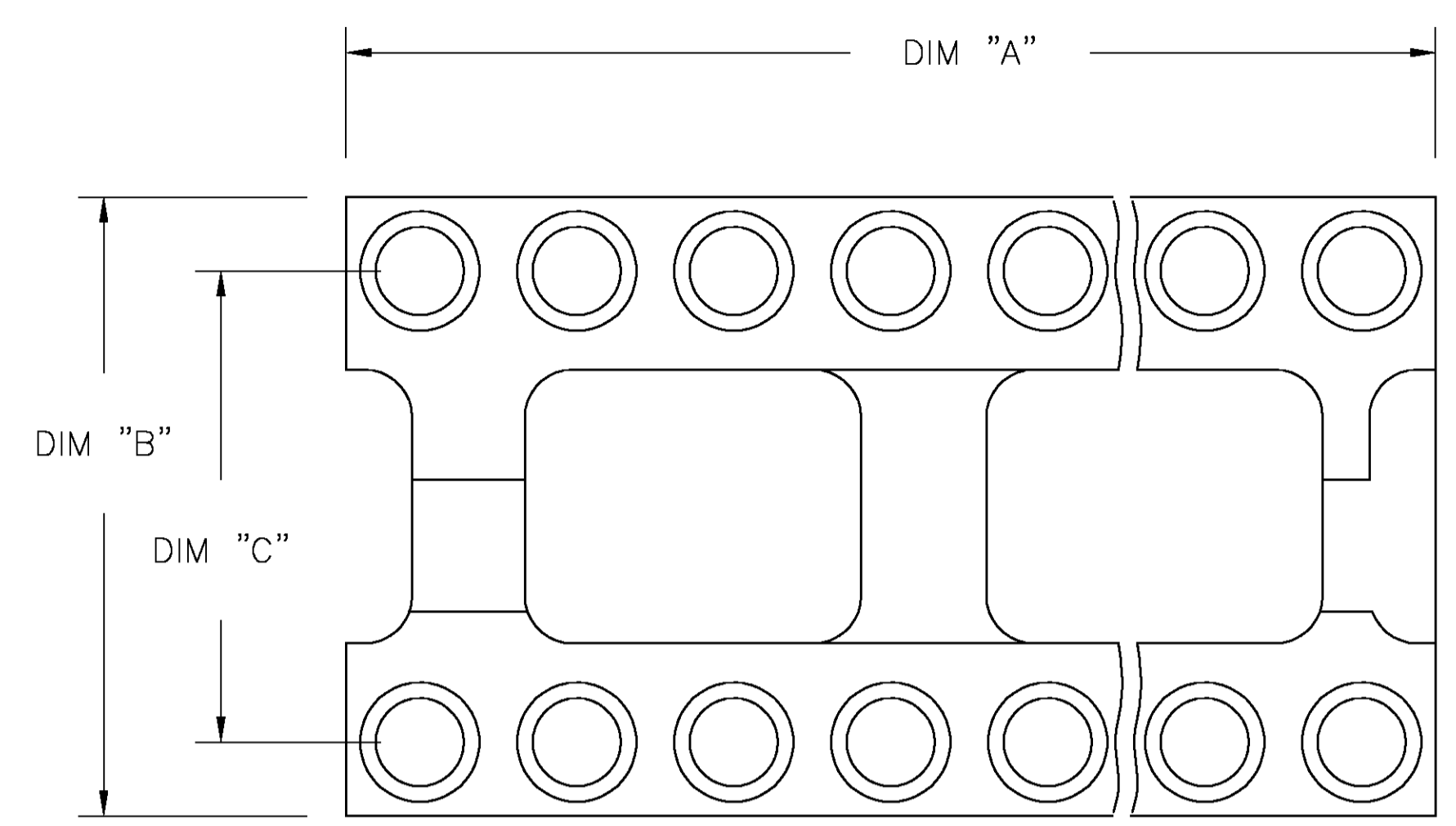


FIG. 2

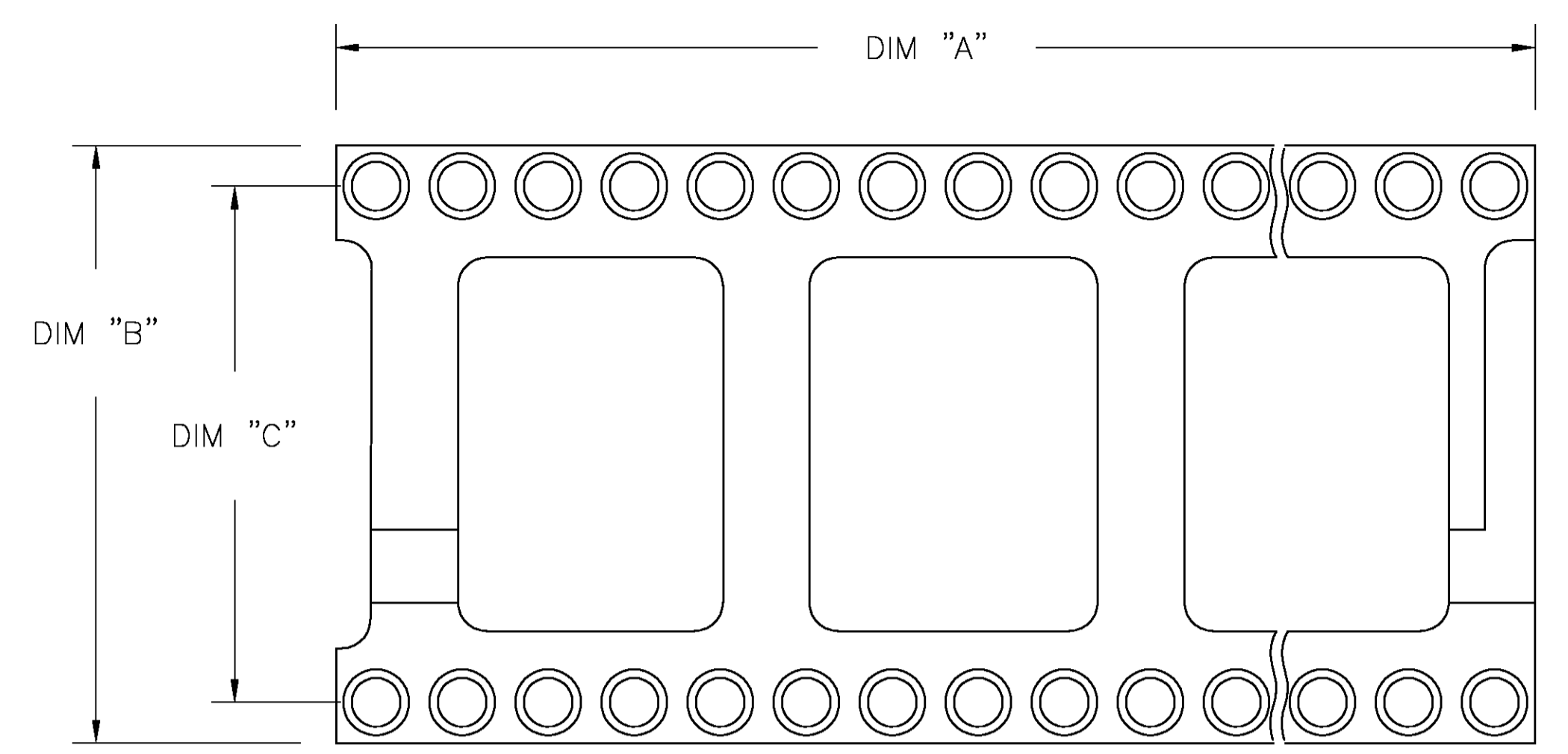
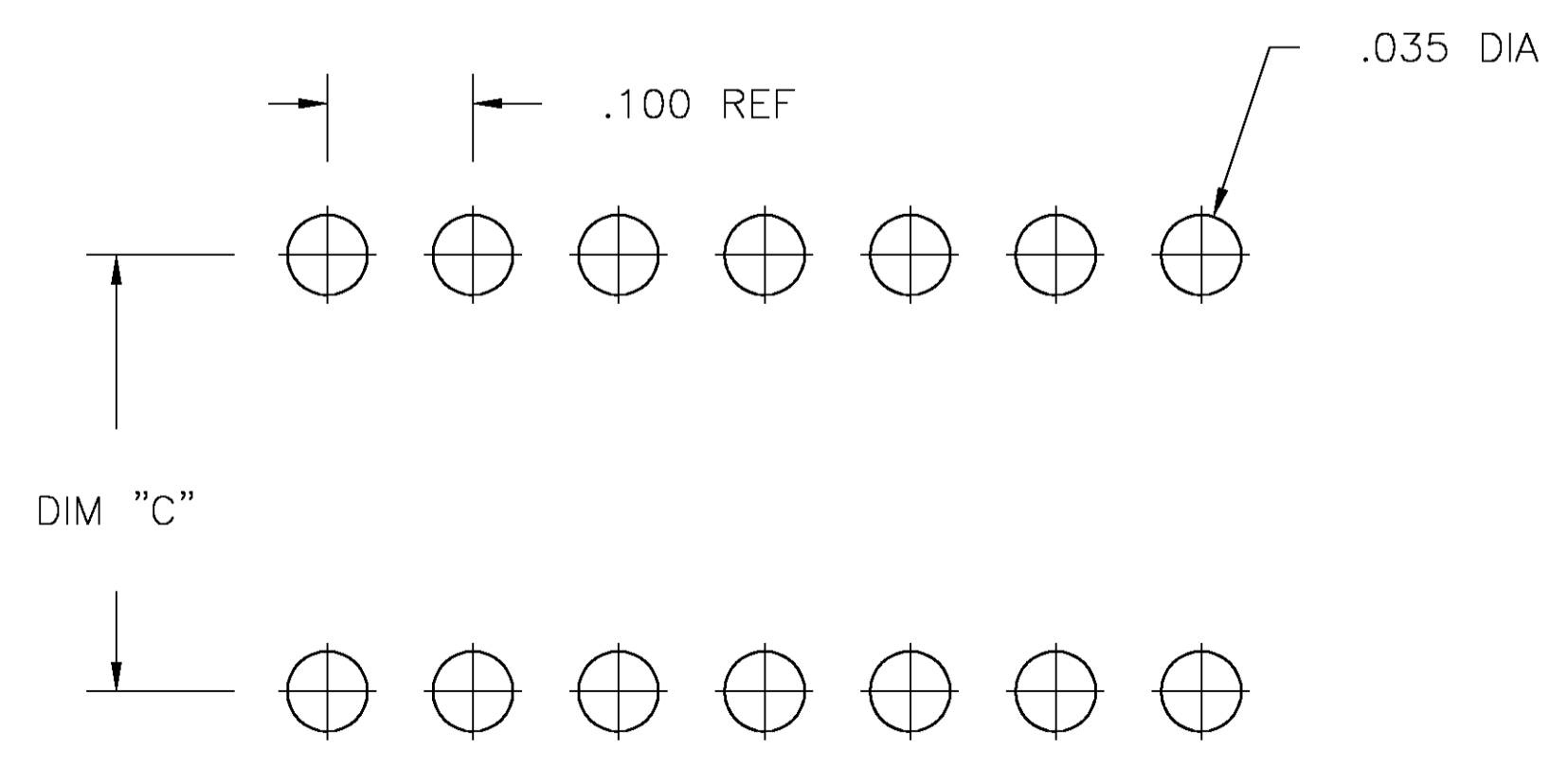
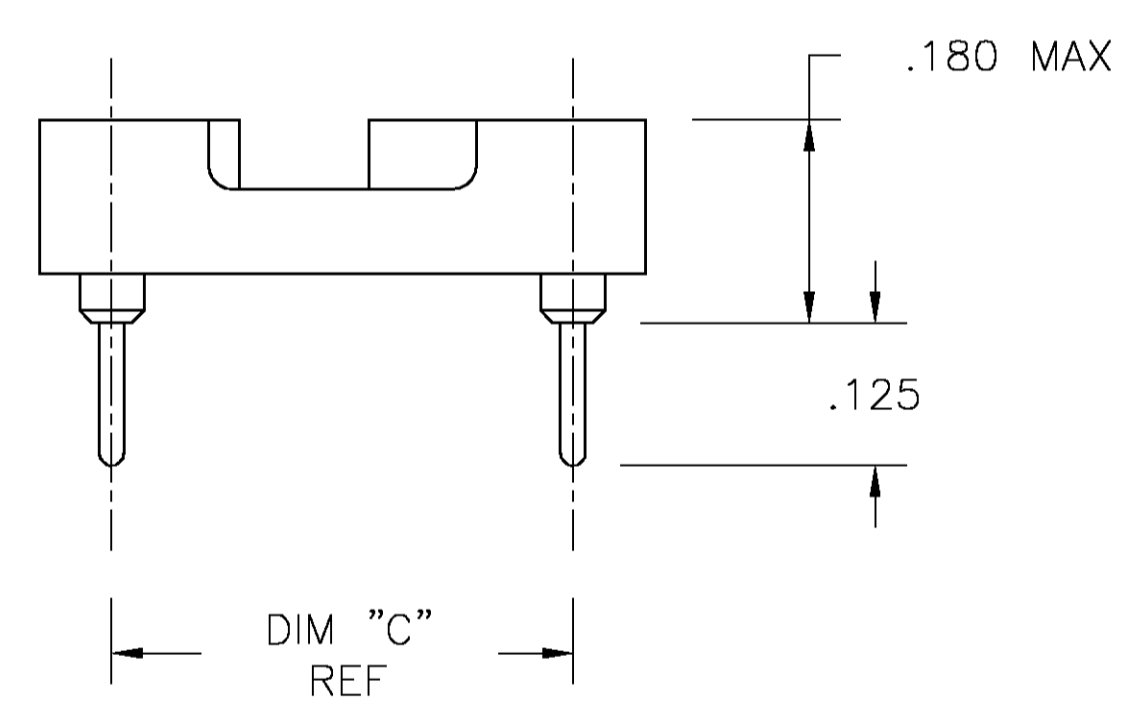
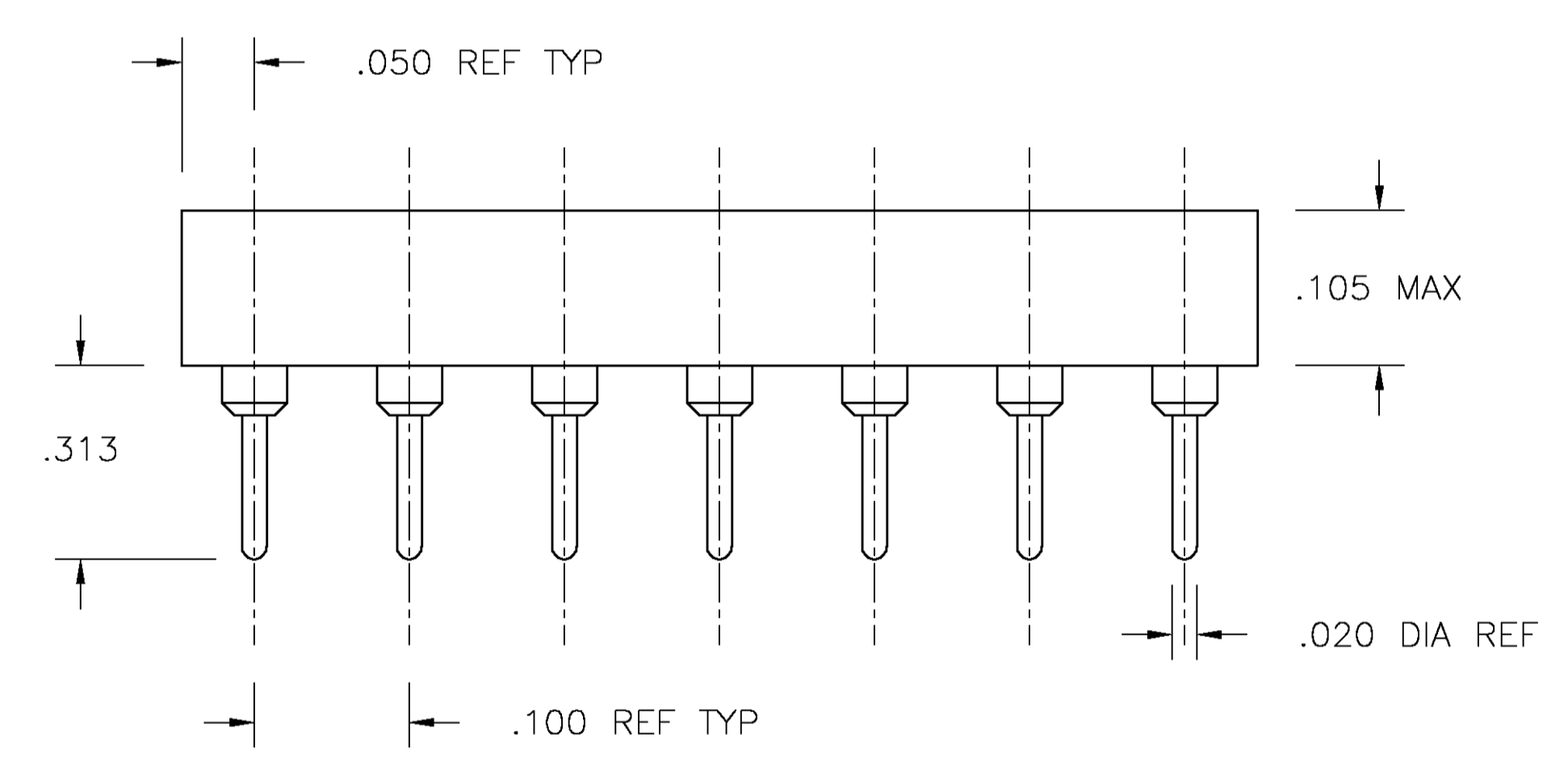


FIG. 3



1. INSULATOR MATERIAL - THERMOPLASTIC POLYESTER, PCT, BLACK, UL94 V-0
2. STAMPED CONTACT - BECU, PLATED WITH 80-200μ" TIN (LEAD FREE) OVER 75-100μ" COPPER.
3. SLEEVE - COPPER, PLATED WITH 180-340μ" THK TIN (LEAD FREE) OVER 75-125μ" MIN NICKEL.
5. STAMPED CONTACT-BECU, PLATED WITH GOLD FLASH OVER 50-100μ" NICKEL
6. STAMPED CONTACT-BECU, PLATED WITH 20μ" MIN GOLD OVER 30-100μ" NICKEL.
7. ELECTRICAL:
  - CONTACT RESISTANCE: 10 MILLIOHMS MAX
  - CONTACT RATING: 3 AMPS
  - CAPACITANCE: 1.0 pF PER MIL-STD-202, METHOD 305
  - INSULATION RESISTANCE: 5000 OHMS MIN @ 500 VDC PER MIL-STD-1344, METHOD 3003.1
  - DIELECTRIC WITHSTANDING VOLTAGE: 1000 VOLTS (RMS) PER MIL-STD-1344, METHOD 3001.1
8. MECHANICAL:
  - INSERTION FORCE: 179 GRAMS AVG
  - WITHDRAWAL FORCE: 63 GRAMS AVG
  - "ACCEPTS IC PIN - .009"X.015" THROUGH .011"X.020", OR .016" TO .021" DIAMETER, .150/.105 LONG"
9. ENVIRONMENTAL:
  - OPERATING TEMPERATURE: -55°C TO +105°C

P.C.B. HOLE LAYOUT  
 TOLERANCE ±.003

|  |  |                  |     |           |                     |  |                  |
|--|--|------------------|-----|-----------|---------------------|--|------------------|
| THIS DRAWING IS A CONTROLLED DOCUMENT. |  | DIN              | BSV | 27JUL04   |                     | Tyco Electronics Corporation<br>Harrisburg, Pa 17105-3608              |                  |
| DIMENSIONS: INCHES                     |  | CHK              |     |           |                     | NAME: OPEN FRAME DIP. ECONOMY (STAMPED CONTACT) (REF AUGAT 800 SERIES) |                  |
| TOLERANCES UNLESS OTHERWISE SPECIFIED: |  | APVD             |     | K. WRIGHT | PRODUCT SPEC        |  | RESTRICTED TO    |
| 0. PLC ± -                             |  | APPLICATION SPEC |     |           | SIZE: A1            |  | CAGE CODE: 00779 |
| 1. PLC ± -                             |  | WEIGHT           |     |           | DRAWING NO: 1571552 |  | REV: E1          |
| 2. PLC ± -                             |  | CUSTOMER DRAWING |     |           | SCALE: 4:1          |  | SHEET: 1 OF 2    |
| 3. PLC ± .005                          |  |                  |     |           |                     |  |                  |
| 4. PLC ± -                             |  |                  |     |           |                     |  |                  |
| ANGLES ± -                             |  |                  |     |           |                     |  |                  |
| FINISH: SEE NOTES                      |  |                  |     |           |                     |  |                  |

|                               |      |     |           |       |       |   |    |             |
|-------------------------------|------|-----|-----------|-------|-------|---|----|-------------|
| △ <sub>3</sub> △ <sub>6</sub> | GOLD | TIN | .400±.005 | .500  | 1.200 | 2 | 24 | 5-1571552-7 |
| △ <sub>3</sub> △ <sub>6</sub> | GOLD | TIN | .300±.005 | .400  | 1.200 | 2 | 24 | 5-1571552-6 |
| △ <sub>3</sub> △ <sub>6</sub> | GOLD | TIN | .900±.005 | 1.000 | 3.200 | 3 | 64 | 5-1571552-5 |
| △ <sub>3</sub> △ <sub>6</sub> | GOLD | TIN | .600±.005 | .700  | 2.400 | 3 | 48 | 5-1571552-4 |
| △ <sub>3</sub> △ <sub>6</sub> | GOLD | TIN | .600±.005 | .700  | 2.100 | 3 | 42 | 5-1571552-3 |
| △ <sub>3</sub> △ <sub>6</sub> | GOLD | TIN | .600±.005 | .700  | 2.000 | 3 | 40 | 5-1571552-2 |
| △ <sub>3</sub> △ <sub>6</sub> | GOLD | TIN | .600±.005 | .700  | 1.800 | 3 | 36 | 5-1571552-1 |
| △ <sub>3</sub> △ <sub>6</sub> | GOLD | TIN | .600±.005 | .700  | 1.600 | 3 | 32 | 5-1571552-0 |
| △ <sub>3</sub> △ <sub>6</sub> | GOLD | TIN | .600±.005 | .700  | 1.400 | 2 | 28 | 4-1571552-9 |
| △ <sub>3</sub> △ <sub>6</sub> | GOLD | TIN | .600±.005 | .700  | 1.200 | 2 | 24 | 4-1571552-8 |
| △ <sub>3</sub> △ <sub>6</sub> | GOLD | TIN | .400±.005 | .500  | 1.100 | 2 | 22 | 4-1571552-7 |
| △ <sub>3</sub> △ <sub>6</sub> | GOLD | TIN | .300±.005 | .400  | 1.000 | 2 | 20 | 4-1571552-6 |
| △ <sub>3</sub> △ <sub>6</sub> | GOLD | TIN | .300±.005 | .400  | .900  | 2 | 18 | 4-1571552-5 |
| △ <sub>3</sub> △ <sub>6</sub> | GOLD | TIN | .300±.005 | .400  | .800  | 2 | 16 | 4-1571552-4 |
| △ <sub>3</sub> △ <sub>6</sub> | GOLD | TIN | .300±.005 | .400  | .400  | 1 | 8  | 4-1571552-3 |
| △ <sub>3</sub> △ <sub>6</sub> | GOLD | TIN | .300±.005 | .400  | .700  | 2 | 14 | 4-1571552-2 |
| △ <sub>3</sub> △ <sub>5</sub> | G F  | TIN | .400±.005 | .500  | 1.200 | 2 | 24 | 3-1571552-7 |
| △ <sub>3</sub> △ <sub>5</sub> | G F  | TIN | .300±.005 | .400  | 1.200 | 2 | 24 | 3-1571552-6 |
| △ <sub>3</sub> △ <sub>5</sub> | G F  | TIN | .900±.005 | 1.000 | 3.200 | 3 | 64 | 3-1571552-5 |
| △ <sub>3</sub> △ <sub>5</sub> | G F  | TIN | .600±.005 | .700  | 2.400 | 3 | 48 | 3-1571552-4 |
| △ <sub>3</sub> △ <sub>5</sub> | G F  | TIN | .600±.005 | .700  | 2.100 | 3 | 42 | 3-1571552-3 |
| △ <sub>3</sub> △ <sub>5</sub> | G F  | TIN | .600±.005 | .700  | 2.000 | 3 | 40 | 3-1571552-2 |
| △ <sub>3</sub> △ <sub>5</sub> | G F  | TIN | .600±.005 | .700  | 1.800 | 3 | 36 | 3-1571552-1 |
| △ <sub>3</sub> △ <sub>5</sub> | G F  | TIN | .600±.005 | .700  | 1.600 | 3 | 32 | 3-1571552-0 |
| △ <sub>3</sub> △ <sub>5</sub> | G F  | TIN | .600±.005 | .700  | 1.400 | 2 | 28 | 2-1571552-9 |
| △ <sub>3</sub> △ <sub>5</sub> | G F  | TIN | .600±.005 | .700  | 1.200 | 2 | 24 | 2-1571552-8 |
| △ <sub>3</sub> △ <sub>5</sub> | G F  | TIN | .400±.005 | .500  | 1.100 | 2 | 22 | 2-1571552-7 |
| △ <sub>3</sub> △ <sub>5</sub> | G F  | TIN | .300±.005 | .400  | 1.000 | 2 | 20 | 2-1571552-6 |
| △ <sub>3</sub> △ <sub>5</sub> | G F  | TIN | .300±.005 | .400  | .900  | 2 | 18 | 2-1571552-5 |
| △ <sub>3</sub> △ <sub>5</sub> | G F  | TIN | .300±.005 | .400  | .800  | 2 | 16 | 2-1571552-4 |
| △ <sub>3</sub> △ <sub>5</sub> | G F  | TIN | .300±.005 | .400  | .700  | 2 | 14 | 2-1571552-3 |
| △ <sub>3</sub> △ <sub>5</sub> | G F  | TIN | .300±.005 | .400  | .400  | 1 | 8  | 2-1571552-2 |
| △ <sub>3</sub> △ <sub>2</sub> | TIN  | TIN | .400±.005 | .500  | 1.200 | 2 | 24 | 1-1571552-7 |
| △ <sub>3</sub> △ <sub>2</sub> | TIN  | TIN | .300±.005 | .400  | 1.200 | 2 | 24 | 1-1571552-6 |
| △ <sub>3</sub> △ <sub>2</sub> | TIN  | TIN | .900±.005 | 1.000 | 3.200 | 3 | 64 | 1-1571552-5 |
| △ <sub>3</sub> △ <sub>2</sub> | TIN  | TIN | .600±.005 | .700  | 2.400 | 3 | 48 | 1-1571552-4 |
| △ <sub>3</sub> △ <sub>2</sub> | TIN  | TIN | .600±.005 | .700  | 2.100 | 3 | 42 | 1-1571552-3 |
| △ <sub>3</sub> △ <sub>2</sub> | TIN  | TIN | .600±.005 | .700  | 2.000 | 3 | 40 | 1-1571552-2 |
| △ <sub>3</sub> △ <sub>2</sub> | TIN  | TIN | .600±.005 | .700  | 1.800 | 3 | 36 | 1-1571552-1 |
| △ <sub>3</sub> △ <sub>2</sub> | TIN  | TIN | .600±.005 | .700  | 1.600 | 3 | 32 | 1-1571552-0 |
| △ <sub>3</sub> △ <sub>2</sub> | TIN  | TIN | .600±.005 | .700  | 1.400 | 2 | 28 | 1571552-9   |
| △ <sub>3</sub> △ <sub>2</sub> | TIN  | TIN | .600±.005 | .700  | 1.200 | 2 | 24 | 1571552-8   |
| △ <sub>3</sub> △ <sub>2</sub> | TIN  | TIN | .400±.005 | .500  | 1.100 | 2 | 22 | 1571552-7   |
| △ <sub>3</sub> △ <sub>2</sub> | TIN  | TIN | .300±.005 | .400  | 1.000 | 2 | 20 | 1571552-6   |
| △ <sub>3</sub> △ <sub>2</sub> | TIN  | TIN | .300±.005 | .400  | .900  | 2 | 18 | 1571552-5   |
| △ <sub>3</sub> △ <sub>2</sub> | TIN  | TIN | .300±.005 | .400  | .800  | 2 | 16 | 1571552-4   |
| △ <sub>3</sub> △ <sub>2</sub> | TIN  | TIN | .300±.005 | .400  | .700  | 2 | 14 | 1571552-3   |
| △ <sub>3</sub> △ <sub>2</sub> | TIN  | TIN | .300±.005 | .400  | .400  | 1 | 8  | 1571552-2   |

| FINISH CONTACT/SLEEVE | "C" MAX | "B" MAX | "A" MAX | FIG | NO. OF POSN | PART NO. |
|-----------------------|---------|---------|---------|-----|-------------|----------|
|-----------------------|---------|---------|---------|-----|-------------|----------|

THIS DRAWING IS A CONTROLLED DOCUMENT. DWN 27JUL04  
 DIMENSIONS: INCHES TOLERANCES UNLESS OTHERWISE SPECIFIED:  
 0 PLC ± -  
 1 PLC ± -  
 2 PLC ± -  
 3 PLC ± .005  
 4 PLC ± -  
 ANGLES ± -

APVD K. WRIGHT  
 PRODUCT SPEC  
 APPLICATION SPEC

NAME Tyco Electronics Corporation  
 Harrisburg, Pa 17105-3608

OPEN FRAME DIP. ECONOMY (STAMPED CONTACT)  
 (REF AUGAT 800 SERIES)

SIZE A1 CAGE CODE 00779 DRAWING NO. 1571552  
 WEIGHT - RESTRICTED TO -

CUSTOMER DRAWING SCALE 1:1 SHEET 2 OF 2 REV E1